

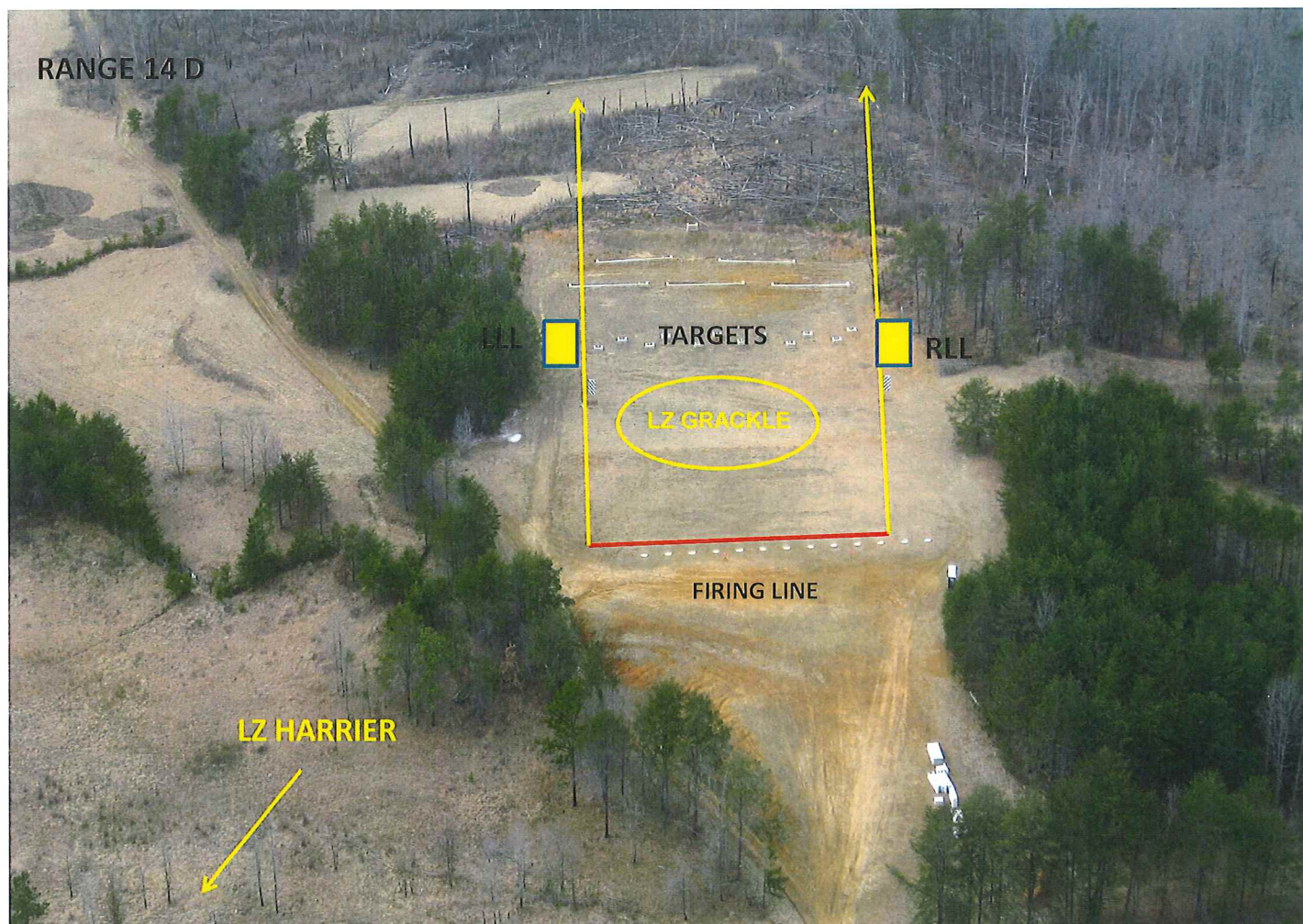
RANGE 14D

SOP

RANGE DESCRIPTION

Range 14D is an active small arms, multipurpose range located at Grid 87507350. It is accessible from MCB 1.

Max firing distance: 275M



WEAPONS ACCOMMODATED

- Service Rifle
- Light and Medium Machine Guns
- Shotgun
- Pistol
- Approved Foreign Weapons
- Grenade launcher (for illum, smoke and TP rounds)
- AT-4 (9mm trainer rounds)
- Sniper Rifle

AMMUNITION AUTHORIZED: *NO ARMOR-PIERCING AMMUNITION ALLOWED*****

- Pistol (All)
- Shotgun (All)
- .22cal
- 5.56mm/.223 Ball and linked
- 7.62mm Ball and linked
- 7.62mm X 51mm / .308 Special Ball
- AT-4 (9mm trainer rounds)
- 40mm (illumination, ground smoke and TP)
- USMC-Approved foreign weapons ammunition up to 7.62 x 54R

TARGETS/SIMULATORS/DEVICES:

- Paper, plastic or wood and provided by user.
 - Approved AR-500 ballistic steel targets are authorized.
 - Steel targets will not be engaged closer than 150m with 5.56/.223 or 7.62/.308. **(NO EPR ON STEEL)**
 - Refer to RTAM SOUM 2-02 for pistol and shotgun firing on steel targets.
 - Targets must be placed so that impacts will land within lateral limit markers.
- Contact Training Support Center (TSC) at (703)784-4492 for other Targetry

Minimum engagement distances for steel targets:

- Pistol: 7 meters
- Shotgun (buck/bird): 10 meters
- Shotgun (slug): 50 meters
- 5.56mm/.223 Ball/link: 150 meters
- 7.62mm Ball/linked: 150 meters
- .308 Special Ball: 150 meters
- Approved foreign weapons ammunition
 - Pistol: 7 meters
 - 5.45mm: 150 meters
 - 7.62mm Ball and linked: 150 meters
 - .308 Special Ball: 150 meters
 - 7.62mm x 54R: 150 meters

PRIMARY DIRECTION OF FIRE. South West

RANGE RESTRICTIONS/SPECIAL INSTRUCTIONS

1. All range regulations (MCBO 3570.1) and the Range 14D SOP must be adhered to.
2. The only weapons and ammunition approved for use on this range are listed in this certification and SOP. There shall be no deviation from or modification to the approved weapons and ammunition.
3. The Officer-in-Charge (OIC) shall be the rank of Staff Sergeant or above and will be certified in accordance with MCB Range Regulations. The Range Safety Officer (RSO) shall be the rank of Sergeant or above and will be qualified in accordance with MCBQ Range Regulations (MCBO 3570.1A) and MCO 3570.1C. The OIC and RSO must both be present during all live-fire.

4. Ensure range flags are posted, ear protection is worn (eye protection for steel), safety brief is given, Range Control contacted and all fires are directed between the left and right lateral limits markers (black and white striped).
5. All brass, trash, targetry and materials will be removed completely at the end of training by the using unit. This includes any materials used to place targets on. A Range Control Patrolman will conduct the post inspection for the range.
6. Targets are limited to wood, paper, plastic, approved ballistic steel and the automated targets. No other targets will be used such as bowling pins, clay targets, cans, etc.
7. Ballistic Steel targets (AR-500) are authorized. **Steel targets will not be engaged closer than 150 meters with 5.56mm/.223 or 7.62mm/.308. Minimum steel target engagement distance is 7 yards for pistol, 10 yards for shotgun buckshot/birdshot and 50 yards for slugs. No EPR ammunition will be fired on steel targets.**
8. Automatic fire must be limited to 6-9 round bursts.
9. Firing on the move is authorized in accordance with the following procedures:
 - Movement will be restricted to walking straight forward, to the rear and simple button-hook techniques.
 - All shots will be directed straight downrange.
 - There will be no more than two shooters per instructor/safety supervisor moving at a time. (Example: 7 shooters = 4 instructor/safety supervisors).
 - There will be at least one target width/3 meters separation between shooters.
 - Targets fired upon will be no farther than 50m.
 - No steel targets will be engaged with rifles while firing on the move. If engaging steel targets on the move with pistol or shotgun, there will be no more than one (1) shooter and (1) instructor/safety supervisor moving downrange at a time.
 - Individual shooters will fire at no more than two targets at a time while firing on the move (oriented straight downrange).
 - Semi-auto/single shots only.

10. Glass targets (Snipers) are authorized with the following restrictions:

a. All glass fragments/spalling will be completely removed from the range upon completion of training. This can be done by utilizing drop cloths/sheets.

b. For angled glass shots, the target will be positioned so that the gun-target line (the shot) is oriented straight down range.

c. Glass will not be fired at less than 100 yds.

11. Units that do not occupy their range within two hours of their scheduled occupy time will lose the use of that range for that day.

12. Units that have requested contractor support (i.e., automated targets, PITS targets, battlefield effects simulators, etc.) that are not present on the specified range within 1 hour of the requested time and have not contacted RMB/TSCQ will forfeit all contracted support for the day.

13. Units that have occupied a range with approved contractor support (i.e., automated targets, PITS targets, battlefield effects simulators, etc.) and that have not begun to use that support within 2 hours of the requested hour of operation will forfeit all contracted support for the day.

14. Units that are training with contractor support (i.e., automated targets, PITS targets, battlefield effects simulators, etc.) that place themselves voluntary into check fire for 2 hours during the approved support operational hours will forfeit all support for the day.

15. Units that encounter situations where contractor support (i.e., automated targets, PITS targets, battlefield effects simulators, etc.) is delayed or interrupted by circumstances beyond the control of the requesting unit (i.e., RMB directed check fire, ASP support, MEDEVAC, etc.) must contact RMB/TSCQ in order to arrange continued support within the scope of the contract and available assets.

LASERS AUTHORIZED: Class 1 - 4. Refer to current LASER certification

FACILITIES (Number of Each)

Towers: 0

Sheds: 0

Ammo Breakdown: 1

Parking: Limited

Description of Other Structures: None

UTILITIES AVAILABLE

Electricity: None
Lights: None
Water System: None

INSTALLED COMMUNICATIONS. None

<u>MEASURED DISTANCES</u>	<u>MILES</u>	<u>MGRS</u>
Range Control	8.3	87406360
TBS	7.8	87106390
WTBN	4.8	87806740
ASP	6.3	91256605
EMT/Fire (Fire House 3)	4.8	89606710
Mainside Gate	8.3	94406440
Camp Upshur	5.2	80007850
Nearest MEDEVAC LZ	0.1	87507340 (LZ Grackle)

AVAILABLE DAYS/HOURS. 350/All

AREA SUITABILITY

<u>Unit Type</u>	<u>Unit Size</u>	<u>Number of Units</u>
Combat Arms	Squad	1

GEOGRAPHICAL DATA

Access Routes: MCB 1
Soil Type: Dirt/clay
Terrain Type: Level
Vegetation: Grass/Woodland

COMMUNICATION REQUIREMENTS:

1. A radio check is required immediately upon occupying any portion of the RTA, every 30 minutes in a live fire status and every 3 hours in a non-live fire status.
2. The Range Control Facility (RCF) Fire Desk Net Control call sign is "Range Control". Your call sign is "Range XX" (name of range, training area or facility unit is occupying).
3. The primary RCF Fire Desk Net Control frequencies are: ELMR talk group "RC Safety" (ground) and 323.7 AM UHF (air).
4. The secondary RCF Fire Desk Net Control is telephone, numbers: 703-784-5321 or 5322.
5. OIC/RSO will monitor the RCF primary and secondary Safety Nets at all times. Instant communication is required.

6. Any unit with organic ELMR radios will have their ELMR radios programed with the "RC Safety" talk group and use those radios as their primary means of communication within the RTA.

7. Units without organic ELMR assets will be issued ELMR radios from RMB upon check-in.

8. Approved Non-ELMR radios are only authorized for internal communication (ground).

9. If the RCF cannot reach a unit within the RTA via primary communication, the unit will be contacted via the secondary means of communication.

10. Upon loss of primary communication the OIC/RSO will initiate a "check fire"/cease training status and will contact the RCF via secondary communication. This communication will be maintained while primary communication is being restored. Units may only resume firing/training once primary communication has been re-established and clearance is granted by the RCF.

INJURY CLASSIFICATIONS:

Injuries are classified into the following categories in order to aid in casualty evacuation from the RTA.

1. ROUTINE. Routine injuries are those injuries that are not threatening to life, limb or eyesight; and conditions or illnesses treatable by medication or procedures available at the base medical facilities.

2. PRIORITY. Priority injuries are those injuries that require immediate medical attention but are not threatening to life, limb, or eyesight if treated promptly.

3. URGENT. Urgent injuries are severe injuries that are threatening to life, limb, or eyesight and require immediate medical attention.

4. MASS CASUALTY. A mass casualty is a series of injuries with multiple priority and urgent medical patients.

MEDICAL EVACUATION (MEDEVAC) PROCEDURES:

1. Injury occurs.

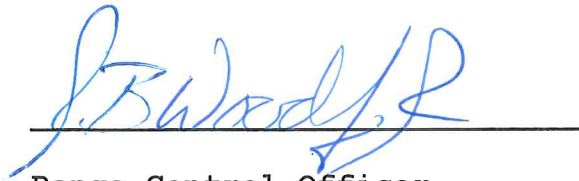
2. Range immediately cease-fires.

3. Medical support evaluates/treats injured personnel.

4. Range OIC/RSO notifies the RCF of the injury, is the victim conscious/unconscious and what type of MEDEVAC transportation is requested (ground/air).

5. The OIC/RSO must maintain constant radio contact with Range Control and awaits further instructions.

*Minor injuries and illnesses not requiring medical services need not be reported to the RCF but should be reported in unit training logs.

A handwritten signature in blue ink, appearing to read "J. B. Woodly", is written over a solid horizontal line.

Range Control Officer

Date: 18 JAN 2018